

ROLLOFFS USA, INC.

MOBILE WASTE AND RECYCLABLE TRANSPORTATION EQUIPMENT

Model 6022 & 7522

Rolloff Hoist

Owner's/Operator's Manual



ROLLOFFS USA, INC.

Rolloff Hoist Owner's/Operator's Manual

Rolloffs USA, Inc.
Po box 727 • Durant, Ok 74702-0727
Phone 580.924.6355 • Fax 580.924.1285

Table of Contents

C H A P T E R 1

Warning and Caution Labels	1
Safe Operating Procedures	2
Rolloffs USA Inc. Warranty	3-4
Warranty Procedure	5
Warranty Report	6

C H A P T E R 2 (O P E R A T I O N)

Operating a P.T.O	7-8
Operating a Directional Control Valve	9-10
Operating the Hoist	11-12

C H A P T E R 3

Maintenance	1
Drawings/Illustrations	1
Electrical Schematic	2
Hydraulics Schematic	2

C H A P T E R 3

Index	5
--------------	----------

Warning and Caution Labels

These simple warning and cautions can not be overstated. Careless operation of this equipment can cause serious injury or death. Follow all safety procedures and pay attention to all warning and caution labels.

W A R N I N G

This unit to be operated by qualified personnel.

C A U T I O N

To prevent possible serious injury or death:

Do Not travel with the hoist in the raised position.

Do Not go under a raised hoist unit without first pinning the hoist unit to prevent accidental lowering.

Do Not leave the unit raised or partially raised while unattended or during performance of maintenance or service under unit. Unless you have pinned the unit to prevent it from accidentally lowering.

Do Not attempt to raise a loaded unit when vehicle is on unlevelled ground.

Do Not stand or move through the area where the unit is operating.

W A R N I N G

To prevent possible injury or death, the hoist must be in the full down position for over the road travel.

W A R N I N G

Empty the unit before performing maintenance and service.

W A R N I N G

The manufacturer is responsible for safety in design and construction, but the owner(s) and operator(s) are responsible for safe operation of equipment.

W A R N I N G

Rolloffs USA, Inc. makes no warranties regarding the safety of the equipment unless these safety instructions are observed by the owner(s) and operator(s) at all times.

Safe Operating Procedures

H ydraulic and mechanical systems offer us the ability to move and manipulate heavy loads, but, with this great potential to do work comes a great responsibility to safely use this powerful equipment. The equipment must be installed and operated by authorized personnel that have the training and understanding for safe and proper use. The owner's and operators of this equipment must be vigilant in there efforts to keep all persons safe from potential accidents. The guidelines are as follows:

- All defects, malfunctions, or suspect operation must be reported to the owners to allow for immediate attention and repair
- Only Qualified personnel should have the keys to the equipment and no unqualified personnel should ever be allowed to operate equipment.
- Only qualified personnel should repair, adjust, alter, or modify this equipment.
- Training for authorized personnel should be performed by responsible individuals and all potential dangers should be covered before learning to operate the controls to the system.
- All problems should be corrected immediately. Some problems may be, but are not limited to, the following cracked welds, bulging metal, deformed metal, excessive oil leaks, electrical sparking or shocks. Inspect the equipment daily for any problems.

Rolloffs USA Inc. Warranty

Rolloffs USA, Inc., hereafter referred to as the manufacturer, warrants each new product of its manufacture to be free from defects in material and workmanship, under normal use and service, to the original purchaser only, for a period of twelve(12) months, subject to the conditions below. Our obligation under this warranty is limited to repair or replacement with a genuine manufacturer's part, any part of the product of our manufacture which is returned to us within fifteen(15) days after the discovery of the defect, properly identified, transportation charges prepaid, and not more than twelve(12) months after purchase by the original purchaser, provided that, in our judgment, the part is defective.

The manufacturer will furnish, without charge, FOB our plant a genuine Rolloffs USA, Inc. part. To replace any part of the product of its manufacture, which proves to be defective in normal use and service during this period.

The manufacturer's warranty or obligation in connection with the sale of this equipment:

- Shall be expressly limited to the repair or replacement of the defective parts, as stated above and covers only those labor charges specifically authorized by the Manufacturer. All other damages and claims, statutory or otherwise, being hereby expressly waived by the purchaser, this includes but is not limited to any towing cost and damage incurred from equipment down time.
- Shall not apply to any failure or damage incurred through neglect, lack of maintenance, misuse, accident, improper installation, redesigning of assemblies, or through any other cause beyond the control of the Manufacturer.
- Shall not apply to any major component such as cylinders, pumps, valves, etc., which have been disassembled in any way, or if any parts are left uncovered.
- Shall not apply if the equipment has been operated beyond the factory recommended maximum capacity.
- Does not cover products of other manufacturers beyond such warranty as is made by such manufacturer.

ROLLOFFS USA, INC.

- Service parts sold by Rolloffs USA, Inc. (hoses, cables, filters, etc.) shall have a ninety (90) day warranty for replacement only, provided that factory inspection reveals a material or workmanship defect. Any labor required to replace or repair the part shall be the responsibility of the owner.
- All perspective warranty parts must be returned to a location selected by Rolloffs USA Inc. no more than fifteen (15) days after receiving the replacement part or the warranty can be voided.

No claim under this warranty shall be valid, unless such claim is submitted within twelve (12) months after date of sale or within fifteen (15) days after the discovery of the defect, which is the basis for such claim, whichever event shall occur first. There are no warranties, expressed or implied, which extend beyond the warranty set forth in this Owner's Manual, and any other warranties, expressed or implied, are hereby disclaimed by the Manufacturer.

Rolloffs USA Inc.

Warranty Procedure

To best serve our customers needs the warranty department will use the following procedure to handle all warranty claims.

1. Customer notifies Rolloffs USA, Inc at (580) 924-6355 of warranty need. The replacement parts will be shipped out that day (overnight shipping is available upon request and depending on parts availability).
2. Warranty report (found on page 6 of this manual or call (580) 924-6355 to have a copy faxed to you) must be filled out completely and mailed or faxed to the contact information below.
Rolloffs USA
Po box 727
Durant, Ok 74702
Fax: (580) 924-1285
Ph: (580) 924-6355
3. Customer must issue a purchase order for the new part(s) and return the defective part(s) within two weeks of receiving the replacement part(s) or, the warranty request will be voided. To return a defective part(s), the customer needs to obtain a return number from the parts salesperson and send damaged or defective part(s) to the above address for Rolloffs USA, Inc.
4. Rolloffs USA, Inc will return the part(s) to the original vendor for inspection or certification upon receipt of the damaged or defective part(s). If the warranty is valid Rolloffs USA, Inc will issue credit to the customer for the warranty claim amount.

Warranty Report

Customer _____ Date _____

Address _____ Rep. _____

City _____ State _____ Zip _____ Phone _____

Product _____ Model _____ S/N _____

Date Shipped _____ Date Put Into Service _____

Original Sales Order No. _____ Original Work Order No. _____

Problem

Solution

Action Taken

Warranty Approved ____ Yes ____ No Repair Price \$ _____

Reported By _____

Approved By _____

Rolloffs USA Inc.

Operating a ROH6022 & ROH7522 Hoist



Safety is very important when operating a powerful piece of machinery. Please familiarize yourself with the following instructions, pictures, and diagrams before operating your hoist.

WARNING:

The p.t.o. must be shifted off before driving the truck. Failure to do so before driving the truck can result in injury or death.

CAUTION:

Lock the truck's brakes before shifting the p.t.o. on or off.

CAUTION:

Before working on the p.t.o. turn off the engine.

Shifting the p.t.o. to on/off

Manual Transmission

Shifting the p.t.o. *on*

1. Push in the clutch pedal.
2. Wait for the transmission to stop turning.
3. Shift the p.t.o. lever to p.t.o. on
4. Release the clutch pedal.



Shifting the p.t.o. *off*

1. Push in the clutch pedal.
2. Wait for the transmission & p.t.o. to stop turning.
3. Shift the p.t.o. lever to p.t.o. off
4. Release the clutch pedal.



Shifting the p.t.o. to on/off

Automatic Transmission with Manual Shift p.t.o.

Note: Do not shift the p.t.o. while the engine is in neutral this will cause the gears to clash.

Shifting the p.t.o. *on* with converter driven gear

1. Shift the transmission into any drive position.
2. Shift the p.t.o. lever to pto on.
3. Shift the transmission into neutral.
4. Release the clutch pedal.



Shifting the p.t.o. *off* with converter driven gear

1. Shift the transmission into any drive position.
2. Shift the p.t.o. lever to p.t.o. off



Automatic Transmission with Clutch Pack(power shift, Hot shift) p.t.o.

Note: The engine should be at idle rpm to shift the p.t.o. on or off.

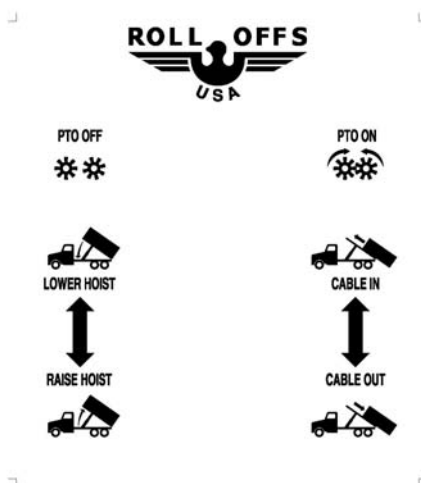
See the transmission's manufacturer's manual for special instructions.

CAUTION:

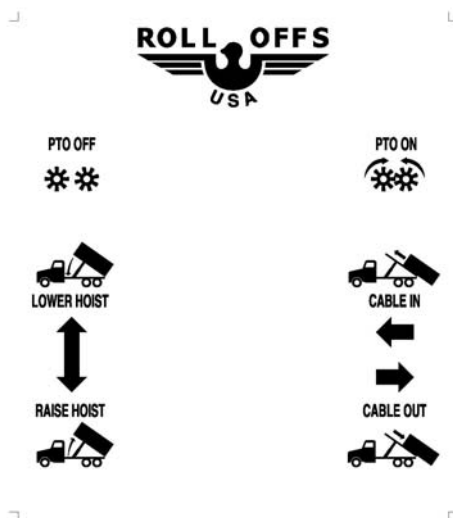
Failure to follow proper procedures will result in premature p.t.o. failure and possible damage to other equipment.

Operating the control valves

Cab Mounted Controls 2 Sticks (Air Shift)



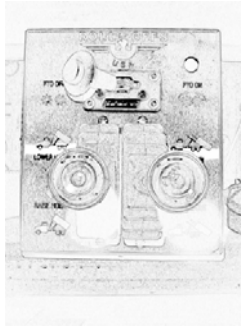
Cab Mounted Controls Joy Stick (Air Shift)



Operating the control valves

To use in cab air controls (2 sticks):

1. Locate control box between driver and passenger seat in cab.
2. Use the left control stick to raise or lower the hoist
 - Pull the handle to raise the hoist
 - Push the handle to lower the hoist
3. Use the next control to the right to move the cable in or out
 - Pull the handle to let the cable out.
 - Push the handle to bring the cable in.

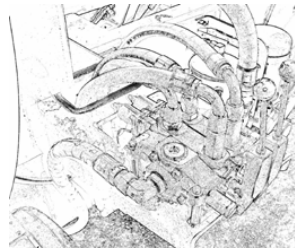


To use in cab air controls (Joy stick):

1. Locate control box between river and Passenger seat in cab.
2. Use the Joy stick control raise/lower the hoist & control cable direction.
 - Pull the handle back to raise the hoist
 - Push the handle forward to lower the hoist
 - Push the handle right to let the cable out.
 - Pull the handle left to bring the cable in.

To use outside cab valve mounted controls:

1. Locate control valve outside cab behind drivers..
2. Use the left control stick to raise or lower the hoist
 - Pull the handle to raise the hoist
 - Push the handle to lower the hoist
3. Use the next control to the right to move the cable in or out
 - Pull the handle to let the cable out.
 - Push the handle to bring the cable in.



Operating the Hoist

WARNING:

Clear all overhead structures and power lines before raising or lowering hoist.

CAUTION:

Read and fully understand the instruction Manual for operating the hoist.

CAUTION:

Your truck is equipped with a “hoist up” alarm and turns on anytime the hoist is not in the full down position. Do not tamper with its operation. Serious injury or death may occur if the alarm is removed or tampered with.

Loading a container onto the hoist



1. Back the truck up to the hook end of the container.
2. Engage the p.t.o.
3. Let the cable out.
4. Raise the hoist until the rear roller is touching the ground.
5. Hook the rectangular cable end to the hook on the container.



6. Pull the container with the cable until the container guides are past the hinge point on the hoist.
7. Lower the hoist to the angle of the container.
8. Continue to pull the cable while lowering the hoist gradually until the hoist is almost level (raised 3-4 inches off the truck frame).
9. Pull the container to the front stops.
10. Lower the hoist completely to engage the container pin lock.
11. Attach ratchet tie downs at the rear of the container.
12. Tighten the ratchet tie-down securely before transporting.
13. Disengage the p.t.o.

Operating the Hoist

Dumping a container.



1. Get to the dump site.
2. Engage the p.t.o.
3. Open the gate on the container and secure gate with chain.
4. Raise the hoist.
5. Pull the truck forward to dump contents
6. Lower the hoist
7. Close the gate
8. Disengage p.t.o.

Unloading a container from the hoist



1. Get to unloading site.
2. Remove ratchet tie-downs from container.
3. Engage p.t.o.
4. Raise the hoist
5. Let the cable out until the container wheels are touching the ground.
6. Pull the truck forward while letting cable out and raising the hoist until the rest of the container slides off.
7. Unhook the rectangular cable end from the container.
8. Lower the hoist
9. Hook the cable unto the holding hook on the hoist.
10. Pull the slack out of the cable.
11. Disengage the p.t.o.

Maintenance

Maintenance is important for the safe operation and long life of your hoist. Simple maintenance may save you costly repairs or lack of maintenance could cost you by voiding your warranty.

Daily (Minimum Inspection)

1. Inspect Cable for:
 - Broken wires
 - Severe kinks or twists
 - Crushed cable
2. Inspect Sheaves for:
 - Excessive wear or damage to sheave
 - Inspect all hardware on the cable for excessive wear or looseness ie: clamps, rectangular hook-up end
 - Replace or repair any part in need of repair immediately.

Weekly- Maintenance

1. Grease Hoist:
 - Side rollers
 - Sheaves (4 horizontal and 1 vertical)
 - Rear hinge
 - Lift cylinders
 - Guide roller
 - Rear ground roller

After 1st 30 days- Maintenance

- Change return-line hydraulic filter

Every 60 days thereafter - Maintenance

- Inspect hydraulic fluid for discoloration. Milky color indicates water or condensate in fluid. Darkened color indicates rust or other contaminants. If either occurs change fluid and in-line filter.
- Change in-line filter
Extend the cylinders to make sure the tank fluid level has been lowered.
- Listen for abnormal pump sounds
Check and tighten if necessary any loose hydraulic fittings.
- Grease p.t.o. input shaft if so equipped.

Maintenance

(fluid tank)

Every 60 days-

Clean fluid tank and strainer

- Drain hydraulic fluid from tank.
- Remove suction line from hose barb.
- Remove suction strainer from tank by removing 3 in fitting.
- Clean and check strainer for damage and make sure bypass valve works.
- Swab out fluid tank to remove sediment.
- Wrap threads with Teflon tape
- Replace strainer
- Reconnect suction line to hose barb.
- Refill tank with hydraulic fluid.

Every 60 days-

Change in-line hydraulic filter when changing the oil

- Make sure the fluid level is below the filter inlet
- Make sure the engine and p.t.o. are off.
- Relieve system pressure by pushing and pulling both levers on the direction control valves.
- Remove the lower filter.
- Loosen union and rotate top filter to bottom position.
- Remove second filter.
- Replace both filters and tighten.

Maintenance

(Hydraulic hose)

CAUTION:

Keep in mind these special precautions before inspecting your hydraulic system:

1. Pressurized hydraulic fluid is dangerous and can puncture skin and damage your eyes. Never touch a pressurized system with any part of your body. Use wood or cardboard to locate pressurized leaks.
2. Hot hydraulic fluid can severely burn you.
3. Flammable hydraulic fluids can explode or cause fires.
4. Hydraulics energy creates mechanical movement and motion to your equipment. Relieve potential energy in your system by pushing and pulling all directional control valves until all energy has been relieved.
5. Electrical systems can cause electrocution, and sparks,(that may lead to fires or explosions) – properly disconnect and tag-out equipment.

Inspecting hydraulic hoses

- Lockout and tag-out equipment. Disconnect battery.
- Remove all potential energy. Place hydraulic system in a neutral state by relieving pressure in entire system.
- Inspect hoses for cracks, tears, abrasion, brittleness, blisters or anything else unusual. and check for loose or broken fittings.
- Check the other hydraulic components for loose or broken parts.
- Repair or replace any problems immediately.

Maintenance

(Installing a cable)

Important Notes:

- 7/8" X 80' 6X37 STEEL CORE CABLE – USA MADE
- 7/8" CROSBY WIRE ROPE CLIPS- USA MADE
- ***CLAMP LOOSE END OF CABLE AGAINST CURVED PART OF U CLIP. SEE DIAGRAM***
- 5 CLAMPS @ 19" APART, TORQUE 225 FT LBS

